

## Monitoring of the entire cold chain

The Q-tag CLm can be programmed with 5 individual alarm limits from -25 °C to +50 °C. Thanks to the break-off tab, it is clear whether the device has actually started. Immediate and easy decision-making is ensured due to precise date and time information on the device's display. With its long lifetime of up to 5 years, the Q-tag CLm is ideal for monitoring the entire cold chain.

- Individual alarms programmed to customer specifications
- Displays minimum and maximum temperature extremes
- Cumulative duration of the overrun for each alarm limit

**WHO product  
prequalification**  
E006/014

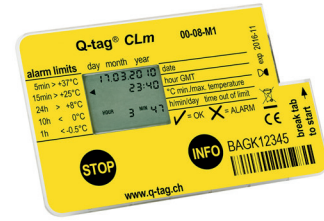


**Berlinger & Co. AG Switzerland** +41 71 982 88 11  
**Berlinger USA LLC** +1 508 366 0084  
info@berlinger.com • www.berlinger.com

# Technical Specification

## Q-tag CLm

DESCRIPTION	Electronic shipping indicator
MANUFACTURER'S REF	Q-tag CLm
TYPICAL APPLICATION AREA	International supply chain National supply chain Closed organisations supply chain Storage ambient conditions
EXTERNAL DIMENSIONS (L X W X H)	85 x 55 x 11,5 mm, Display 23 x 18 mm
WEIGHT	35 g
STORAGE CONDITION (INACTIVE)	0 °C to +30 °C / +32 °F to +86 °F
OPERATING TEMPERATURE	-30 °C to +55 °C / -22°F to +131 °F
DISPLAY VISIBLE	-10 °C to +55 °C / +14°F to +131 °F
ALARM TEMPERATURE RANGE	-25 °C to +50 °C, in 0.1 °C increments / -13 °F to +122 °F
ACCURACY OF TEMPERATURE MEASUREMENT	+/- 0.8 °C from -30°C to -20 °C +/-1.44. °F from -22 °F to -4 °F +/- 0.5 °C from -20 °C to +40 °C +/-0.9 °F from -4 °F to +104 °F +/- 0.8 °C from +40 °C to +55 °C +/-1.44 °F from +104 °F to +131 °F
ALARM LIMITS	Up to 5 individually programmable alarm limits (2 single and 3 cumulative events)
ALARM TIME	1 minute to 20 days
TEMPERATURE MEASUREMENT INTERVAL	Every minute
MEASUREMENT ACCURACY OF THE TIME	+/- 30 minutes / year
MEMORY SIZE	–
BATTERY	Lithium coin cell battery (CR2032) complies with IATA DGR Packing Instruction 970-Section II.
PROTECTION CLASS	IP64
BARCODE ON LABEL	UCC/EAN-128
OPERATING LIFETIME AND SHELF LIFE	Up to 5 years- expiry date printed on label
ACTIVATION	Break-off tab
STOPPING	STOP button
CONFIGURATION	Pre-set by Berlinger & Co. AG
WARRANTY	2 years from date of delivery (see general Berlinger Terms & Conditions)
MANIPULATION	Q-tag CLm cannot be manipulated, reset or turned off without destroying it
STANDARDS	ROHS compliant, Regulation (EC) No 1907/2006 REACH, CE (DoC), verification report, EN 60068-2-31, EN 60068-2-6, EN 60721-3-2, EN 61000-4-2, EN 61000-6-2/-3, DO160G sec 21. cat H/M, PQS, safety datasheet (battery), EN 60529 (IP64)



Subject to change. Please note that all information in this document is correct at the time of publication. Due to our policy of continuous product development, we reserve the right to change this information without prior notice.

For more information download the whole user manual [www.berlinger.com/user-manuals](http://www.berlinger.com/user-manuals)



**Berlinger & Co. AG Switzerland** +41 71 982 88 11  
**Berlinger USA LLC** +1 508 366 0084  
[info@berlinger.com](mailto:info@berlinger.com) • [www.berlinger.com](http://www.berlinger.com)