

Handling information of the automatic opener for the berlinger® *lausanneKIT*



Instruction for assembling and use

Assembling

One compact opening machine is delivered together with cable and accessories as:

- Sample of the berlinger® *lausanneKIT*
- Rubber pad



1. Connect the machine with the air pressure
Minimum needed pressure is 2 bar



2. Connect the machine to the electricity by plugging in the cable.

Information

- The standard power range is from 220 to 240 VAC. (optional 100 VAC)
- Use the two handles on each side of the opener to lift it.

Now the machine is ready to use.

Instruction of use

1st Step

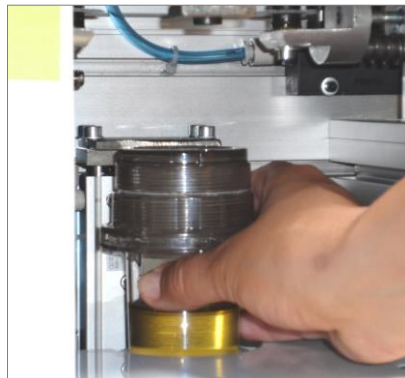


Turn the power on by pushing the switch on the back side.

2nd Step

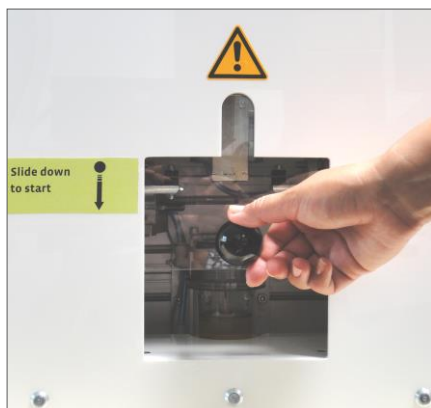
check first, if the container cap is fully and properly closed.

3rd Step



Place the berlinger® *lausanneKIT* firmly into the white cup holder

4th Step



To start the opening process slide down the door by using the black knot on the front

All is protected by the door and you make take away the hands. It takes about 6-8 seconds

After finishing the opening process the door opens automatically (do not open manually)
Do not touch it while opening.



6th Step

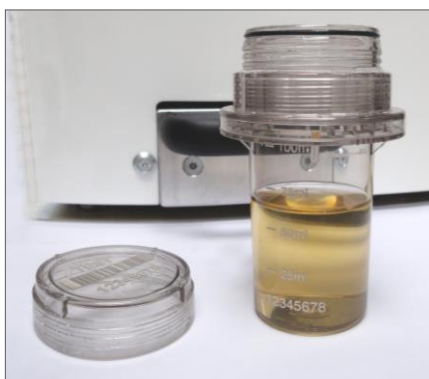


The door is open now and you may take out the berlinger® *lausanneKIT*

7th Step



Open the cap by turning it in an anti-clockwise direction.



The separated top of the cap can be re-used to close the container again.

The manufacturer shall not held be liable if the berlinger® *lausanneKIT* and the opening tool is used beyond the manufacturers given limitations and handling instructions.